



F12 – SystmOne

What is it? A series of templates built directly into the primary care clinical systems to aid navigation, pathfinding & clinical guidance, data entry and referrals for Nottinghamshire CCGs.

Who is it for? Everyone! It will benefit all primary and secondary care staff and patients.

What are its objectives? To remind busy clinicians of the correct, up to date pathways and templates available for patients as well as signposting information for nurses and GP receptionists. The tools will aim to reduce clinical variation, standardise data input and output and make everyday tasks more efficient and easier.

Who updates it? The project is being built and overseen by the F12 project team working within the data management team, but the content and updates come from the clinical community.

How do I access it? Press F12 key and then search for F12 then select and drag 'F12 Pathway and F12 Data entry' then drag and drop to the left-hand side of the screen: -

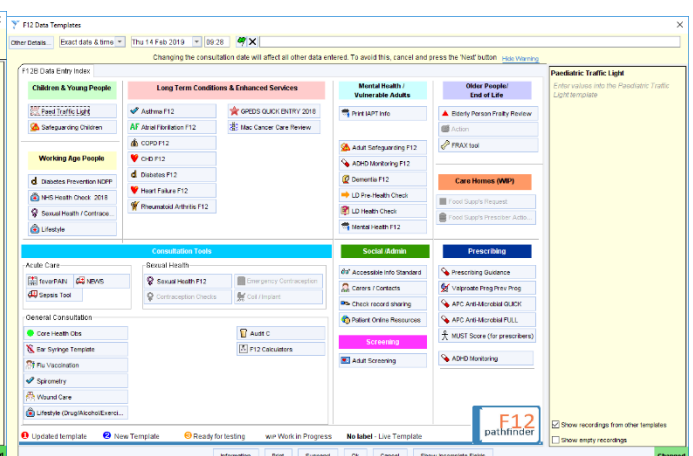
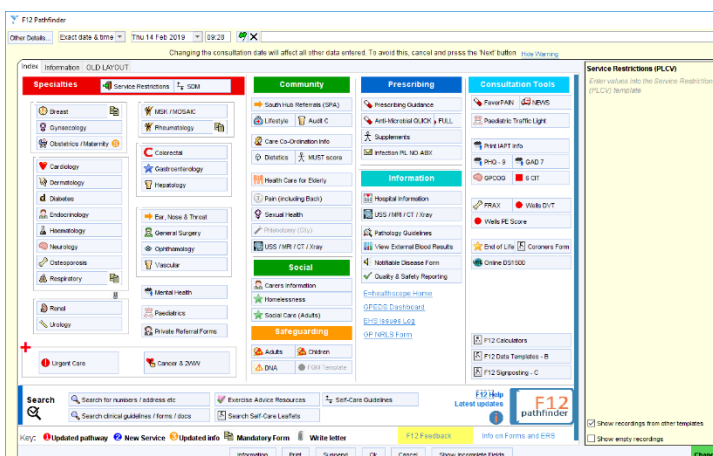
- Pathfinder (Referral, Guidance and Navigator)
- Data entry – A wide selection of data entry templates are available for use, these incorporate QOF requirements

What is in it? The F12 team were asked to provide access to templates and agreed guidance for the 9 specialties accounting for half of the referrals to secondary care. These are now all active and ready to be used. Specialties included are: Cardiology • ENT • T&O • Gastroenterology • Colorectal Surgery • Urology • Respiratory • Rheumatology • Pain Management

It also includes much, much more such as: 2WW forms for NUH • Paediatrics • Carers information • Prescribing guidance • Maps, tools and calculators • Decision support tools • Useful forms (e.g. coroners) • Safeguarding guidance • Shared decision making • Vascular • Urgent Care • Phone numbers • Carers

Pathfinder F12 Menu

Data Entry F12 Menu



More content is added every week, if you can't find something on the F12 pathfinder, Contact the F12 team on ruccg.f12.pathways@nhs.net

© The content of this document is the copyright of Nottinghamshire Health Informatics Service (NHIS) unless stated otherwise. You may only use this material for your personal use, private study, research or in-house use. You must not copy, distribute or publish any material produced by NHIS unless formal permission is obtained from the copyright holder.